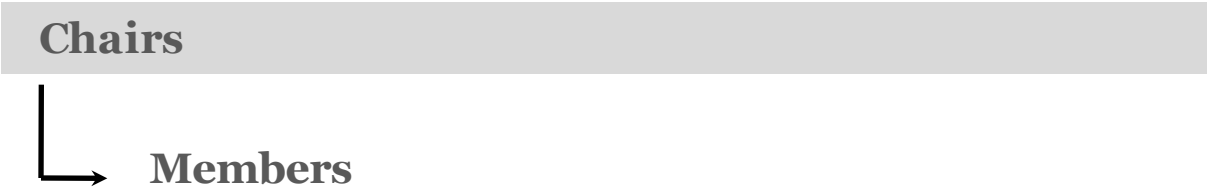


# Roadmap



# Rep. Jim Costa



## Biography

Democrat Jim Costa, elected in 2004, is a third-generation farmer who concentrates on the agricultural issues that affect his district’s rural residents, often trying to find a middle ground between production and resource protection. He is among the California delegation’s most conservative Democrats but takes his party’s side on most big issues. Born in Fresno, he was raised on his family’s dairy farm. He is the grandson of Portuguese immigrants who settled in the San Joaquin Valley near the turn of the 20th century. In 1978, Costa was elected to the state Assembly, where he was known as a moderate Democrat. In 2002, after he was forced to retire that year because of term limits, Costa founded a consulting firm. Two years later, when Democratic Rep. Cal Dooley retired after 14 years, Costa entered the race and started off with solid name recognition—his former state Senate district covered the entire congressional district, which was then the 20th District. But Costa’s lengthy legislative record didn’t readily lend itself to the “liberal” label. In a relatively low turnout event, Costa won 53%-47%. In the House, Costa got seats on the Agriculture and the Natural Resources committees, both important to the Valley. When Costa bucks his party, it tends to be on the fiscal issues that bring out his conservative impulses. He was one of just 22 House Democrats to support a failed proposal in March 2012 to adopt the Simpson-Bowles commission’s budget, which imposed politically painful spending reductions to balance the budget.

### Biography

Currently:  
Representative, CA-16  
Elected: 2004

.....

Education:  
CA State U. Fresno, B.A.  
1974

.....

Religion: Roman Catholic

.....

Family: Single

.....

Contact: (202) 225-3341  
2081 Rayburn HOB  
Washington, DC 20515

### Stance on Issues

- Advocate for a high-speed rail system that would go up and down California
- Supported a stronger screening process for refugees from Iraq and Syria who apply for admission into the U.S.

### Major Milestones

- |  |       |
|--|-------|
| Worked to toughen food safety regulation | 2009  |
| .....                                    | ..... |
| Founded a consulting firm                | 2002  |

### Committees

- |                                |
|--------------------------------|
| Committee on Agriculture       |
| .....                          |
| Committee on Natural Resources |
| .....                          |

### Election Results

2014 General		
.....	.....	.....
Jim Costa (D)	Votes: 72,111	Percent: 57.8%
.....	.....	.....
Johnny Tacherra (R)	Votes: 52,570	Percent: 42.2%

Sources: National Journal Almanac, 2016; NY Times, 2017.

# Rep. Henry Cuellar



## Biography

Henry Cuellar, elected in 2004, is one of the most conservative Hispanic Democrats, with a voting record putting him near the center of the House as a whole. But he has shown enough loyalty to his party to win a coveted seat on the Appropriations Committee in 2013. Cuellar (KWAY-ar) was the oldest of eight children of migrant workers who had only elementary school educations. He graduated from Georgetown University and the University of Texas law school, and he later got a Ph.D. in government from UT. From his base in Laredo, he served in the Texas House from 1986 to 2000, where he helped to author the Texas Grant college aid program. In 2001, Republican Gov. Rick Perry appointed him secretary of State even though he is a Democrat. Cuellar resigned in 2002 to run against veteran Republican Rep. Henry Bonilla in the old 23rd District. He got a big boost from a Bonilla gaffe; Bonilla claimed he didn't need Laredo to win, and in response, the Webb County Republican chairman endorsed Cuellar. Cuellar attacked Bonilla for his votes against funding for the State Children's Health Insurance Program, the Family and Medical Leave Act, and Pell grants. In the House, Cuellar was the ninth most conservative Democrat in 2012, according to National Journal's annual rankings. He is a member of the rapidly shrinking Blue Dog Coalition of Democratic fiscal conservatives and was one of just 22 Democrats to support a failed amendment for a fiscal 2013 budget based on the recommendations of the Simpson-Bowles deficit reduction commission.

## Biography

Currently:  
Representative, TX-28  
Elected: 2004  
.....  
Education:  
Georgetown U., B.S., 1976  
U. of Texas, . J.D., 1981,  
Ph.D., 1998  
Texas A & M, M.A., 1982  
.....  
Religion: Roman Catholic  
.....  
Family: Married, 2 children  
.....  
Contact: (202) 225-1640  
Rayburn House Office 2209  
Washington, DC 20515

## Stance on Issues

- Opposed the Dodd-Frank financial overhaul
- Strongly favors a pathway to citizenship for illegal immigrants
- Supports pro-life legislation
- Supports the government funding of renewable energy
- Opposes the repeal of the Affordable Care Act
- Supports second amendment rights

## Committees

Committee on Appropriations  
.....  
.....

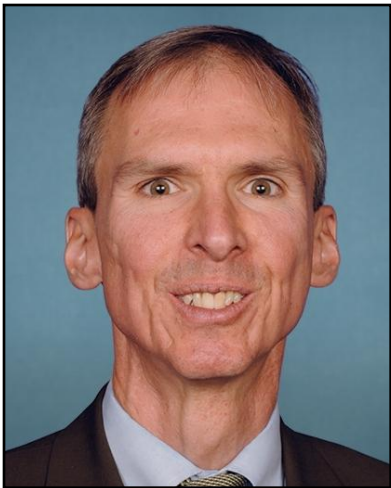
## Election Results

### 2016 General

Henry Cuellar (D)	Votes: 122,086	Percent: 66.2%
Zeffen Hardin (R)	Votes: 57,740	Percent: 31.3%

Sources: National Journal Almanac, 2016. Ballotpedia 2016.

# Rep. Daniel Lipinski



## Biography

Democrat Daniel Lipinski was first elected in 2004 to replace his father, Bill Lipinski, who represented the district for 22 years. Like his father, the younger Lipinski focuses on transportation and manufacturing, but puts his engineering background to work on cyber security and other technology issues. In the House, Daniel Lipinski has kept his pledge to be “not really that different from my father,” who was the most conservative Democrat in the Illinois delegation. He opposes same-sex marriage and abortion rights except when the mother’s life is at stake. He was among the Democrats who declined to vote for California liberal Nancy Pelosi in 2011 as their party’s leader in the House; he cast his vote for Rep. Marcy Kaptur, an Ohioan who is the House’s most senior woman. Two years later, he opted to back Tennessee Democratic Rep. Jim Cooper, an outspoken Pelosi critic. Lipinski declined to support the Democrats’ health care overhaul, saying that its provision banning federal funds for abortions wasn’t strong enough even as other anti-abortion Democrats expressed satisfaction with it. As a member of the Science, Space, and Technology Committee, he worked with Texas Republican Michael McCaul to get a cyber security bill through the House in April 2012. He won House passage in 2010 of a measure setting up a national manufacturing strategy, although it died in the Senate. He introduced a similar bill in 2012, which again passed the House but went no further.

## Biography

Currently:  
Representative, IL-3  
Elected: 2004  
.....  
Education:  
Northwestern U., B.S. 1988,  
Stanford U., M.A. 1989,  
Duke U., Ph.D. 1998  
.....  
Religion: Roman Catholic  
.....  
Family: Married (Judy  
Berkebile)  
.....  
Contact: (202) 225-5701  
RHOB Room 2346  
Washington, DC 20515

## Stance on Issues

- Urges Obama to make action in Sudan a priority
- Supports Obamacare
- Opposes absolute right to gun ownership
- Supports prioritizing green energy

## Committees

House Committee on Science, Space & Technology  
.....  
House Committee on Transportation & infrastructure  
.....

## Election Results

2016 General		
Daniel Lipinski (D)	Votes: 225,320	Percent: 100%
Write-in	Votes: 91	Percent: 0%

Sources: National Journal Almanac, 2017; Ballotpedia, 2017.

# Roadmap

**Chairs**



**Members**

# Rep. Sanford Bishop, Jr.



## Biography

Bishop grew up in Mobile, Alabama, where his father was a college president. He went to Morehouse College in Atlanta, where he was student body president in 1968, attended Emory Law School, and then served in the Army. After a year in New York, he settled in Columbus to practice law. He was elected to the state legislature in 1976. He served there until 1990, when he was elected to the Georgia Senate. In 1992, he ran for the U.S. House and won the general election 64%-36%. Bishop’s voting record is among the most conservative in the Congressional Black Caucus. Over the years, Rep. Bishop has supported a balanced budget, school prayer, a ban on flag burning and a proposed constitutional amendment to prohibit same-sex marriage. He strongly backed the health care overhaul law, describing it as “a piece of legislation whose time has come.” In January 2013, Bishop joined the “Problem Solvers” coalition of lawmakers who agreed to meet monthly to promote bipartisanship. With a seat on the Appropriations Committee since 2003, Bishop has worked to safeguard and deliver funds to the district’s military facilities, and looks out for Georgia’s peanut farmers. On the 2008 farm bill, he helped design the peanut-rotation program. After the Democrats won control of the House in 2006, Bishop gained seats on the Agriculture, Defense, and Military Construction subcommittees at Appropriations. In 2016, Bishop won reelection with 61% of the vote.

## Biography

Position Elected:  
Representative, GA-2  
Elected: 1992  
.....  
Education:  
Morehouse Col., B.A. 1968; Emory  
U., J.D. 1971  
.....  
Religion: Baptist  
.....  
Family: Married (Vivian)  
.....  
Contact: (202) 225-3631  
RHOB Room 2407  
Washington, DC 20515

## Stance on Issues

- Supports pro-choice legislation
- Opposes same-sex marriage
- Opposes repealing the 2010 Affordable Care Act
- Supports building the Keystone XL pipeline
- Opposes gun-control legislation
- Supports federal regulation of greenhouse gas emissions

## Committees

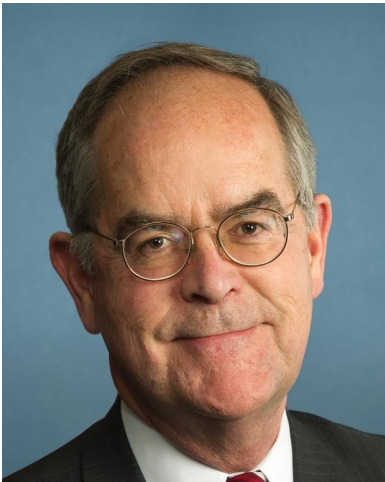
Committee on Appropriations  
.....

## Election Results

2016 General		
Sanford Bishop, Jr. (D)	Votes: 148,543	Percent: 61.2%
Greg Duke (R)	Votes: 94,056	Percent: 38.8%

Sources: Ballotpedia, 2017; National Journal Research, 2017; Vote Smart, 2017.

# Rep. Jim Cooper



## Biography

Jim Cooper, a Democrat elected in 2002 who also served from 1983 to 1994, is a brainy moderate with a tart tongue—especially when it comes to his own party’s leadership. Despite the polarized political climate, he persistently seeks bipartisanship on fiscal matters. In his first stint in Congress, he spoke out against tobacco use and opposed the National Rifle Association in a state where both were popular. In recent years, Cooper has focused on being a leader of the fiscally conservative Blue Dog Coalition and a consensus-builder within the national Democratic Party. New York Times columnist Joe Nocera, in a 2011 column titled “The Last Moderate,” praised Cooper as “the House’s conscience, a lonely voice for civility in this ugly era.” He has introduced numerous measures with GOP support. A longtime proponent of increased government oversight, his bill to strengthen the independence of federal inspectors passed Congress and, despite a veto threat from President George W. Bush, became law in 2008. During the health care debate, Cooper was among the Blue Dogs who worked with Waxman, the Energy and Commerce chairman, to moderate some provisions that conservative Democrats considered government overreach.

## Biography

Currently:  
Representative, TN-5  
Elected: 2002

.....

Education:  
U. of NC, B.A. '75, Oxford U.,  
B.A./M.A. '77, Harvard U.,  
J.D. '80

.....

Religion: Episcopalian

.....

Family: Married , 3 children

.....

Contact: (202) 225-4311  
Longworth Office 1536  
Washington, DC 20515

## Stance on Issues

- Supports: Obamacare, clean energy, absolute right to gun ownership, Iran nuclear deal
- Opposes: Americans with Disabilities Act of 1990, Hurricane Sandy disaster aid fund

## Committees

House Oversight and Government Reform Committee

.....

House Armed Services Committee

.....

## Election Results

2016 General		
Jim Cooper (D)	Votes: 171,111	Percent: 62.6%
Stacy R. Snyder (R)	Votes: 102,433	Percent: 37.4%

Sources: National Journal Almanac, 2017; Ballotpedia, 2017.

# Rep. Lou Correa



## Biography

Lou Correa was born on January 24, 1958 and grew up in Anaheim, California. He holds degrees in Economics from California State University, Fullerton, and a J.D. and MBA from UCLA. Prior to serving in the California State Legislature, he was an investment banker and a real estate broker. Correa served on the California State Assembly for three terms, and then two years on the Orange County Board of Supervisors, representing the state’s 1<sup>st</sup> district. In 2006 and again in 2010, Lou was elected to the California State Senate, representing the 34<sup>th</sup> District. As a state senator, Correa worked on issues related to public safety, mental health, the affordability of higher education and tax equity. Prior to being elected to Congress, Correa served on the Board of the Orange County Family Justice Center, the Orange County Board of the Gang Reduction Intervention Partnership (G.R.I.P.), and the Garden Grove Boys and Girls Club, and he is also a Commissioner of the California High Speed Rail Authority. When Loretta Sanchez (D) announced that she would run for California’s open Senate, Correa decided to run for her old seat. Correa defeated fellow Democrat Bao Nguyen in the general election.

## Biography

Position Elected:  
Representative, CA-46  
Elected: 2016  
.....  
Education:  
California State U., B.A.  
UCLA, MBA; J.D.  
.....  
Religion: Catholic  
.....  
Family: Married (Dr. Esther  
Reynoso), 4 children  
.....  
Contact: (202) 225-2965  
LHOB Room 1039  
Washington, DC 20515

## Stance on Issues

- Supports the Affordable Care Act
- Supports raising the minimum wage
- Supports a woman’s right to choose
- In favor of federal background checks for online and private gun sales
- In favor of legislation allowing transgender students to identify with the gender of their choice

## Committees

- Committee on Veterans’ Affairs
- .....
- Committee on Homeland Security

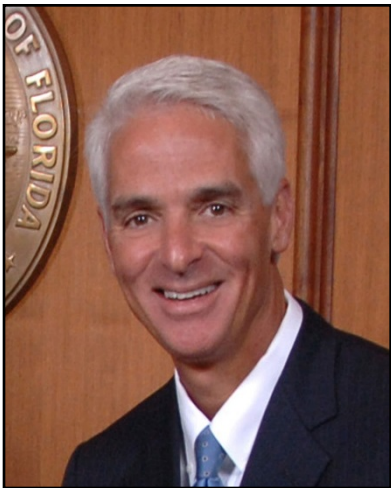
## Election Results

2016 General		
Lou Correa (D)	Votes: 115,248	Percent: 70.0%
Bao Nguyen (D)	Votes: 49,345	Percent: 30.0%

Sources: National Journal Almanac, 2017; Ballotpedia, 2017; LouCorrea.com; VoteSmart.org, 2016, Martin Wiskol, “House candidates take a stand on social issues... or not,” The Orange County Register, April 8, 2016.



# Rep. Charlie Crist



## Biography

Charlie Crist was born on July 24, 1956 in Altoona, Pennsylvania. He graduated high school in St. Petersburg, Florida and went on to attend Wake Forest University for two years and then earned his undergraduate degree from Florida State University. He subsequently received his J.D. from Samford University Cumberland School of Law. Crist went on to work as general counsel to Minor League Baseball, headquartered in St. Petersburg. He was a candidate for public office for the first time in 1986 as a Republican running for a state Senate seat in Pinellas County. He lost and returned to practicing law briefly until he became an aide to Connie Mack III in his successful 1988 U.S. Senate campaign. Crist describes Mack as his political mentor. Crist was elected in 1992 to the Florida Senate from the 20<sup>th</sup> District, which encompassed parts of St. Petersburg and South Tampa. He was reelected in 1994. He was elected Florida education commissioner in 2000 and in 2002 he was elected Florida’s attorney general. As attorney general, Crist disagreed with Governor Jeb Bush on certain issues and received criticism for his handling of the Terri Schiavo case. In 2007 Crist was inaugurated governor of Florida, but angered fellow Republicans for supporting Obama’s American Recovery and Reinvestment Act of 2009. Crist did not run for reelection in 2010 and instead ran for the U.S. Senate against former Florida House Speaker Marco Rubio. After losing the Republican primary to Rubio, Crist ran in the general election as an independent and lost to Rubio. He then worked as a lawyer at Morgan & Morgan in Tampa. He lost the 2014 Florida gubernatorial election in which he was a Republican. He then switched parties again and was elected to represent Florida’s 13<sup>th</sup> District as a Democrat.

## Biography

Position Elected:  
Representative, FL-13  
Elected: 2016

Education: University of Florida,  
B.A., 1978  
Samford University Law School,  
J.D., 1981

Religion: Methodist

Family: Married (Carole Rome), 2  
stepchildren

Contact: (202) 225-5961  
CHOB Room 427  
Washington, DC 20515

## Stance on Issues

- Strongly favors expanding Obamacare
- Supports same sex marriage
- Supports lifting the U.S. embargo against Cuba
- Favors environmental protection measures
- As governor, Crist supported capital punishment
- Shifted from strictly pro-life in his early career to a more nuanced position on abortion as a Democrat

## Committees

- Committee on Science, Space & Technology
- Committee on Financial Services

## Election Results

### 2016 General

Charlie Crist (D)	Votes: 184,693	Percent: 51.9%
David Jolly (R)	Votes: 171,149	Percent: 48.1%

Sources: Ballotpedia, 2017; Heather Caygle, “Charlie Crist’s last shot at redemption,” POLITICO, September 3, 2016; National Journal Almanac, 2017.

# Rep. Vicente Gonzalez



## Biography

Vicente Gonzalez was born to a military family in Corpus Christi, Texas. His mother stressed the importance of education, which motivated Gonzalez to go back to school and get his GED. Afterwards, Gonzalez attended community college classes and eventually earned his B.A. at Embry Riddle Aeronautical University at Corpus Christi Naval Air Station. Soon after receiving his B.A., Gonzalez continued to heed his mother’s advice, pursuing a law degree at Texas A&M. While in law school, Gonzalez interned in a Congressional office to learn more about government. After graduating from law school, Gonzalez founded his own law firm, V. Gonzalez and Associates P.C. The firm focuses on business litigation, catastrophic accidents and property damage. Gonzalez has taken on several major cases including helping South Texas school districts recover millions of dollars from contractors who misspent bond money. Gonzalez announced his candidacy for Texas’s 15<sup>th</sup> congressional district in November 2015 after Rep. Rubén Hinojosa (D) announced he was retiring. Gonzalez faced off against Edinburg School Board Member Juan "Sonny" Palacios, Jr in the Democratic primary. Gonzalez largely self-financed his campaign so he would not have to accept corporate contributions. Even though his campaign was self-financed, he outspent his rival substantially. He won the Democratic primary with 66% of the vote, and he went on to defeat Tim Westley in the general election.

## Biography

Position Elected:  
Representative, TX-15  
Elected: 2016  
.....  
Education:  
Embry Riddle Aeronautical  
University, B.A., 1992;  
Texas A&M University, J.D., 1996;  
.....  
Religion: Catholic  
.....  
Family: Married (Lorena Saenz)  
.....  
Contact: (202) 225-2531  
CHOB Room 113  
Washington, DC 20515

## Stance on Issues

- Supports Obamacare but wants to reform it to expand access and contain costs
- Strongly opposes privatized Social Security
- Supports paying for the first two years of higher education
- Strongly supports military spending
- Supports paid family and maternity leave

## Committees

Committee on Financial Services  
.....

## Election Results

2016 General		
Vicente Gonzalez (D)	Votes: 101,712	Percent: 57.3%
Tim Westley (R)	Votes: 66,877	Percent: 37.7%

Sources: Ballotpedia, 2017; vicengonzalesforcongress.com; National Journal Almanac, 2017.

# Rep. Josh Gottheimer



## Biography

Josh Gottheimer, born in 1975, to a nursery school teacher and a father who started his own business when he was 18. Josh was born and raised in New Jersey. He was first introduced to politics as a high school student when he served as a United States Senate Page for Frank Lautenberg. Josh left New Jersey to attend the University of Pennsylvania, after which he became a Thouron Fellow at Oxford. Upon returning from Oxford, Gottheimer joined the Clinton Administration in 1998 as a speechwriter and stayed there until 2001. He had previously worked on the rapid response team for Bill Clinton during his 1996 reelection campaign. After leaving the Clinton Administration, Gottheimer attended law school at Harvard University. He simultaneously worked for Wesley Clark’s 2004 presidential campaign and John Kerry’s 2004 presidential campaign. After the 2004 election, Gottheimer worked for the Ford Motor Company and eventually became the executive vice president for Burson-Marsteller. Gottheimer also served at the Federal Communications Commission (FCC) and was its first Director of Public-Private Initiatives. Gottheimer currently works as a General Manager for corporate strategy. His race against incumbent Scott Garrett was heavily funded as Democrats fought to unseat Garret, a seven-term Republican frequently labeled as one of the most conservative members of Congress.

## Biography

Position Elected:  
Representative, NJ-5  
Elected: 2016  
.....  
Education:  
University of Pennsylvania, B.A.,  
1997;  
Harvard University, J.D., 2004  
.....  
Religion: Jewish  
.....  
Family: Married (Marla Brooke  
Tusk), 2 children  
.....  
Contact: (202) 225-4465  
CHOB Room 213  
Washington, DC 20515

## Stance on Issues

- Supports the unrestricted right of a woman’s right to choose
- Supports government funding for the development of renewable energy
- Supports gun-control legislation
- Opposes repealing the Affordable Care Act
- Supports increases in infrastructure spending
- Opposes raising taxes

## Committees

Committee on Financial Services  
.....

## Election Results

2016 General		
Josh Gottheimer (D)	Votes: 172,587	Percent: 51.1%
Scott Garrett (R)	Votes: 157,690	Percent: 47.2%

Sources: Ballotpedia, 2017; National Journal Almanac, 2017.

# Rep. Stephanie Murphy



## Biography

Stephanie Murphy, born September 16, 1978, is an educator, businesswoman and national security specialist. Before entering public service, Murphy was a strategy consultant at Deloitte Consulting. She then served as a national security specialist for the Secretary of Defense and later worked at Sungate Capital, leading investment efforts and implementing government affairs initiatives. She also taught business and social entrepreneurship at Rollins College. Murphy is a member of the Council on Foreign Relations and a board member of the Center for Innovative Healthcare and Mead Botanical Gardens. Murphy is a strong advocate of LGBT rights, and was a prominent voice in support of the community in the aftermath of the attacks at Pulse Nightclub in Orlando. She speaks Vietnamese and lives in Winter Park with her husband and two children.

## Biography

Position Elected:  
Representative, FL-7  
Elected: 2016  
.....  
Education:  
BA, William and Mary, 2000  
MS, Georgetown, 2004  
.....  
Religion: Christian  
.....  
Family: Married (Sean), 2 children  
.....  
Contact: (202) 225-4035  
LHOB Room 1237  
Washington, DC 20515

## Stance on Issues

- Supports LGBT equality
- Opposes the absolute right to gun ownership
- Supports reducing the use of fossil fuels
- Supports government funding for Planned Parenthood

## Committees

Committee on Small Business  
.....  
Committee on Armed Services

## Election Results

2016 General		
Stephanie Murphy (D)	Votes: 182,039	Percent: 51.5%
John Mica (R)	Votes: 171,583	Percent: 48.5%

Sources: Ballotpedia, 2017; National Journal Research, 2017.

# Rep. Tom O'Halleran



## Biography

Tom O'Halleran was born in 1946 in Chicago, IL and grew up on a dairy farm. His mother worked intermittently as a secretary and his father worked both as a factory worker and later a janitor. O'Halleran joined the police department in 1966 and served as an officer and later a sergeant in a special operations unit. He received three department commendations and other awards. In 1979, O'Halleran became a government bond trader and served two terms on the Chicago Board of Trade's executive board of directors as chair and vice-chair of the finance, floor operations and planning committees. In 1994, he consulted on design and integration of tech for financial trading floors. O'Halleran retired and moved to Arizona where he became involved in local politics. He was an advocate for Yavapai County in the state legislature and focused on natural resources preservation. He was elected to the Arizona House of Representatives in 2001, serving three terms, and later became a state senator in 2007. O'Halleran served as vice-chair and chair of the Natural Resources and Agriculture Committee in the Arizona House of Representatives, and was a member of Education K-12; Ways and Means; Transportation, Counties and Municipalities; and Environment Committees. In the state Senate, O'Halleran served as vice-chair and chair of the Higher Education Committee. In 2014, he changed his registration from Republican to Independent, blaming the party's inability to legislate on education, water and child-welfare problems. In August, O'Halleran won the Democratic primary for the open seat of Ann Kirkpatrick (D). He went on to win Arizona's 1<sup>st</sup> district in the general election.

## Biography

Position Elected:  
House Representative, AZ-1  
Elected: 2016  
.....  
Education:  
Lewis University 1965-1966;  
DePaul University, 1991-1992  
.....  
Religion: Catholic  
.....  
Family: Married (Pat), 3 children,  
3 grandchildren  
.....  
Contact: (202) 225-3361  
CHOB Room 126  
Washington, DC 20515

## Stance on Issues

- Favors federal role in clean air and water
- Opposes privatization of Social Security
- Supports investment and improvement of veteran care and benefits
- Supports immigration reform and the DREAM act

## Committees

Committee on Agriculture  
.....  
Committee on Armed Services

## Election Results

### 2016 General

Tim O'Halleran (D)	Votes: 142,219	Percent: 50.7%
Paul Babeu (R)	Votes: 121,745	Percent: 43.4%

Sources: Ballotpedia, 2016; National Journal Almanac 2017.

# Rep. Collin Peterson



## Biography

Collin Peterson, first elected in 1990, is one of the few conservatives left in an increasingly liberal House Democratic caucus. He is the top Democrat on the Agriculture Committee, where he works well with like-minded lawmakers representing rural regions. "I am just a country boy, and I am doing the best I can," he once said. Peterson grew up on a farm in Baker, just across the Red River of the North from Fargo, N.D. He graduated from Moorhead State College and then started a certified public accounting business in Detroit Lakes. In 1976, he was elected to the state Senate. In office, Peterson has been known as a free spirit, wearing cowboy boots and playing guitar in a rock band called the Second Amendments (the other members are Republicans) that covers Del Shannon and the Eagles. He is extremely candid with Capitol Hill reporters, sometimes revealing more about the thinking of Republicans than GOP lawmakers themselves. A staunch fiscal conservative and founding member of the Blue Dog Coalition, Peterson has shown a bit more loyalty to his party since it lost the majority in 2011. But he has opposed many of President Obama’s major initiatives. He voted against the New Year’s Day 2013 budget deal aimed at averting the so-called “fiscal cliff” and joined Republicans in 2012 in voting to hold Attorney General Eric Holder in contempt of Congress for allegedly withholding information relating to the botched “Fast and Furious” gun-tracing operation.

## Biography

Currently:  
Rep., Minnesota-7  
Elected: 1990  
.....  
Education:  
Moorhead St. U., B.A. 1966  
.....  
Religion: Lutheran  
.....  
Family: Single, 3 children  
.....  
Contact: (202) 225-2165  
2204 Rayburn HOB  
Washington, DC 20515

## Stance on Issues

- Opposes abortion rights
- Opposes gun control
- Supports constitutional balanced –budget amendment

## Major Milestones

Chairman of Committee on Agriculture	2007
First elected to U.S. House of Representatives	1990

## Committees

Committee on Agriculture  
.....  
.....  
.....

## Election Results

2016 General		
Collin Peterson (D)	Votes: 173,589	Percent: 52.5%
Dave Hughes (R)	Votes: 156,952	Percent: 47.4%

Sources: National Journal Almanac, 2016; Ballotpedia 2016.



# Rep. Brad Schneider



## Biography

Brad Schneider was born on August 20, 1961 in Denver, Colorado. He received a bachelor’s of science in industrial engineering from Northwestern University in 1983 and an M.B.A. from Northwestern’s Kellogg School of Management in 1988. Before beginning his political career, he worked primarily as a management consultant in Deerfield, Illinois helping family-owned businesses. He owned and managed a life insurance agency from 1997 to 2003. In 2008, he started his own consulting company, Cadence Consulting Group. He is very active with the Jewish United Fund/Jewish Federation of Metropolitan Chicago. Schneider represented Illinois’s 10<sup>th</sup> district from 2013 to 2015, serving on the House Committees on Small Business and Foreign Affairs, but he lost his 2014 re-election bid in a rematch against former Republican Congressman Robert Dold, the incumbent whom Schneider had beaten by only 3,326 votes in 2012. Schneider was able to reclaim his seat in 2016, facing Dold for the third time. Schneider won the general election with 52% of the vote.

## Biography

Position Elected:  
Representative, IL-10  
Elected: 2016  
.....  
Education:  
Northwestern University, B.S.  
1983; Northwestern University  
Kellogg School of Management,  
M.B.A. 1988  
.....  
Religion: Judaism  
.....  
Family: Married (Julie Dann), 2  
children  
.....  
Contact: (202) 225-4835  
LHOB Room 1432  
Washington, DC 20515

## Stance on Issues

- Supports stronger gun regulations
- Supports overturning Citizens United and campaign finance reform
- Favors affordable education
- Favors Clean Power Plan
- Supports Obamacare
- Supports DREAM Act and DACA/DAPA
- Favors providing economic aid to Ukraine
- Opposes privatization of Social Security
- Opposes increased restrictions on abortion

## Committees

- Committee on Small Business
- .....
- Committee on Foreign Affairs
- .....
- Committee on the Judiciary

## Election Results

2016 General		
Brad Schneider (D)	Votes: 150,435	Percent: 52.6%
Robert Dold (R)	Votes: 135,535	Percent: 47.4%

Sources: Ballotpedia, 2017; National Journal Research, 2017.

# Rep. Kurt Schrader



## Biography

Kurt Schrader, a Democrat elected in 2008, juggles priorities in a district that is divided between urban and rural. A veterinarian and organic farmer, he is active on small business and agricultural issues. Schrader was born in Bridgeport, Conn., the oldest of three children. His father was a chemical engineer. He studied government at Cornell University, where he met his wife, Martha, also a Cornell student. Schrader went on to pursue his passion for veterinary medicine at the University of Illinois. After college, the couple wanted to move west and settled in Oregon. Schrader ran two veterinary clinics in Canby, and his wife served on the Clackamas County Commission before replacing him in the state Senate. Schrader launched himself into public service as a member of the Canby Planning Commission for 15 years, assisting in development of the city’s land use plan. In 1997, he won a seat in the state House, and six years later, was elected to the state Senate. He developed a reputation as a conservative Democrat and opposed his party on increasing the minimum wage. In the House, Schrader has backed his party on most significant measures but also shown a willingness to go his own way. In 2013, he became the fiscally conservative Blue Dog Coalition’s co-chair for communications and outreach. He originally cosponsored the DREAM Act for children of illegal immigrants but later voted against it, not because it went too far but because he wanted to see a more comprehensive immigration-reform solution.

## Biography

Currently:  
Rep., Oregon (5)  
Elected: 2008  
.....  
Education:  
Cornell U., B.A. 1973,  
U. Of IL, D.V.M. 1977  
.....  
Religion: Episcopalian  
.....  
Family: Divorced (Martha  
Northam (div.)), 5 children  
.....  
Contact: (202) 225-5711  
Rayburn Office 2431  
Washington, DC 20515

## Stance on Issues

- Pro-agriculture and supported organic labeling laws
- Supporter of small business initiatives
- Outspoken critic of the Supreme Court’s *Citizen United* decision
- Supports the Dodd-Frank law
- Supports women’s and LGBT rights
- Supports the Affordable Care Act

## Committees

Committee on Energy & Commerce  
.....  
.....  
.....

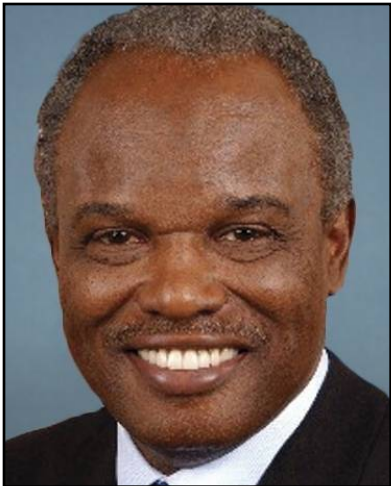
## Election Results

2016 General		
Kurt Schrader (D)	Votes: 199,505	Percent: 53.5%
Colm Willis (R)	Votes: 160,443	Percent: 43.0%

Sources: National Journal Almanac, 2016. Ballotpedia, 2016.



# Rep. David Scott



## Biography

David Scott is the Democratic representative for Georgia’s 13<sup>th</sup> congressional district. Scott is known for being more of a centrist than his other Democrat colleagues in the Congressional Black Caucus. Born in rural South Carolina, Scott later moved to Scarsdale, N.Y. He later graduated from Florida A&M University then did an internship at the U.S. Labor Department in Washington. Scott later earned his M.B.A from the prestigious Wharton School at the University of Pennsylvania. He moved to Atlanta in the early 1970s, and in 1974, he was elected to the Georgia House. In 1982, he won election to the state Senate, where he chaired the Rules Committee. From 1979 to 2002, he owned Dayn-Mark Advertising, which creates and places radio, television, and print ads. The firm is now operated by his wife and two daughter. In 2002, Scott made a bid for the newly created 13th District seat. Scott won the primary with 54% of the vote and won the general election 60%-40%. In the House, Scott has been a more faithful party vote in recent years but has had no reluctance about going his own way voting with Republicans to audit the Fed in 2012 and supporting the Bush tax cuts. On the Financial Services Committee, Scott criticized predatory lenders that exploit would-be homeowners in poor communities. He initially opposed the bailout of the financial markets, but after Chairman Barney Frank, D-Mass., promised to address the Black Caucus’ call for additional protections for homeowners facing foreclosure, Scott switched his vote.

## Biography

Currently:  
Representative, GA-13  
Elected: 2002

.....

Education:  
FL A&M U., B.A. 1967,  
U. of PA, M.B.A. 1969

.....

Religion: Baptist

.....

Family: Married (Alfredia  
Aaron), 2 children; 2  
grandchildren

.....

Contact: (202) 225-2939  
Cannon House Office 225  
Washington, DC 20515

## Stance on issues

- Supports protections against predatory home-lending like the practices precipitating the housing crisis
- Opposes intervention into Syria arguing the situation does not threaten U.S.’ vital national security interests
- Opposes the Iran Nuclear Deal
- Supports financial literacy education in order to prevent exploitative practices
- Supports extending affordable health care coverage and unemployment benefits

## Committees

House Agriculture Committee  
.....  
House Financial Services Committee  
.....

## Election results

2016 General		
David Scott (D)	Votes: 252,833	Percent: 100%
Uncontested	Votes: 0	Percent: 0%

Sources: National Journal Almanac, 2017; Ballotpedia, 2017.

# Rep. Kyrsten Sinema



## Biography

Position Elected:  
Representative, AZ-9  
Elected: 2012

.....

Education:  
Brigham Young University, B.A.,  
1995; Arizona State University,  
M.A. 1999, J.D., 2004, Ph.D., 2012

.....

Religion: None

.....

Family: Single

.....

Contact: (202) 225-9888  
LHOB Room 1725  
Washington, DC 20515

## Biography

Democrat Kyrsten Sinema grew up in Tucson, Arizona. As a child, her family lived in an abandoned gas station without running water or electricity; they eventually moved into a home but remained poor. Sinema graduated as her high school’s valedictorian and went on to earn a bachelor’s degree in social work, followed by a master’s degree in social work, a law degree, and a doctorate in justice studies—all while working full-time. Before her election to Congress she worked as a social worker, a lawyer, an adjunct professor at Arizona State, and an instructor at the Center for Progressive Leadership, a Washington-based institute that trains activists in progressive policies. Sinema was elected to the state Senate in 2010, and she was known in the legislature for her liberal politics. She sponsored several bills aimed at reining in the efforts of Maricopa County Sheriff Joe Arpaio, known nationally for his antipathy to illegal immigration. But she also earned a reputation as someone willing to work with Republicans to pass legislation on human trafficking and other issues. Sinema, who is openly bisexual, also was active on gay rights issues. Saying she was frustrated with the partisan divide in Congress, Sinema quit the state Senate to run for the 9th District U.S. House seat in January 2012, winning 49%-45%.

## Stance on Issues

- Supports pro-choice legislation
- Supports increased federal spending
- Supports federal education standards
- Opposes the Keystone XL pipeline
- Supports government funding for renewable energy
- Supports federal regulation of greenhouse gas emissions
- Supports gun-control legislation

## Committees

Committee on Financial Services

.....

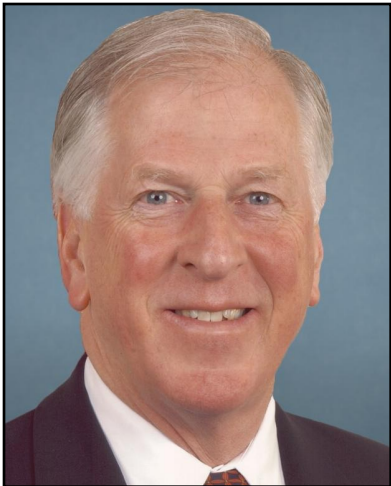
## Election Results

### 2016 General

Kyrsten Sinema (D)	Votes: 169,055	Percent: 60.9%
Dave Giles (R)	Votes: 108,350	Percent: 39%

Sources: Ballotpedia, 2017; National Journal Research, 2017; Vote Smart, 2017; National Journal Almanac, 2017.

# Rep. Mike Thompson



## Biography

Democrat Mike Thompson, first elected in 1998, has a moderate voting record that is among the least liberal of coastal Californians. But he is a trusted ally of Minority Leader Nancy Pelosi, a prodigious fundraiser for his party and a member of the powerful Ways and Means Committee. Thompson grew up in the Napa Valley town of St. Helena, dropped out of high school, served in the Army in Vietnam and earned a Purple Heart. He owned a vineyard and worked as a maintenance supervisor for Beringer, a big winery in the valley. From 1984 to 1990, he was the chief of staff to two Bay Area State Assembly members. In 1990, he was elected to the state Senate, where he chaired the Budget Committee. In 1998, he ran for the U.S. House seat of Republican Frank Riggs. His issue stands—opposition to oil drilling off the California coast, support of abortion rights and the death penalty—were broadly popular. He won the general election 62%-33%. In the House, Thompson joined both the New Democrats and the Blue Dog Coalition of conservative Democrats. He is among the members of his party who agree with Republicans on the need to abolish the estate tax, which he said unfairly burdens family farms. With Republican Rep. George Radanovich of California, he started the Congressional Wine Caucus. In 2003, Thompson got a seat on Ways and Means. On the powerful panel, he was able to enact a tax break for landowners who place their land under conservation easements, a way to preserve farmland. Thompson successfully advocated for rights for airline passengers when they face long flight delays and reducing abuses from private contractors during the Iraq War.

## Biography

Currently:  
Rep., California (5)  
Elected: 1998  
.....  
Education:  
CA St. U., B.A. 1982,  
M.A. 1996.  
.....  
Religion: Roman Catholic  
.....  
Family: Married (Janet), 2  
children, 3 grandchildren  
.....  
Contact: (202) 225-3311  
231 Cannon HOB  
Washington, DC 20515

## Stance on Issues

- Opposes the estate tax saying it burdens family farms
- Supports the Affordable Care Act and taking additional steps to shore up Medicare and Medicaid
- Supports immigration reform which allows pathway to citizenship for families living in U.S. for generations, rewards individuals who follow immigration rules and establishes guest worker program
- Supports measures to encourage private investment in renewable energy

## Committees

Committee on Ways and Means  
.....

## Election Results

### 2016 General

Mike Thompson (D)	Votes: 224,526	Percent: 76.9%
Carlos Santamaria (R)	Votes: 67,565	Percent: 23.1%

Sources: National Journal Almanac, 2016; Ballotpedia, 2016.

# Rep. Filemon Vela



## Biography

Democrat Filemon Vela won the 34th District House seat in part on the strength of his illustrious political family. Brownsville’s federal courthouse bears the name of his late father, a U.S. district judge for more than two decades, and his mother was the city’s first elected woman mayor. Vela was born in Harlingen, at the southern tip of Texas, and raised in nearby Brownsville. After receiving a bachelor’s degree from Georgetown University and a law degree from the University of Texas, he returned to Brownsville to practice law. As a civil attorney, Vela represented school districts seeking restitution for shoddy construction by independent contractors. In one case, he recovered money spent by the district on a poorly built facility; in another, he won recompense for a malfunctioning air-quality control system. He was a civil attorney for 25 years. When Vela launched his campaign, some political observers were surprised by the “D” next to his name. His wife is a Republican justice on the Texas Court of Appeals, and Vela acknowledged that he has at times backed GOP office-seekers. But he aligned himself with the Democratic agenda, calling for “a realistic and fair way” to deal with illegal immigration, protection of Medicare and Social Security benefits, and tax cuts for small businesses as an incentive to hire workers. Vela is considered a moderate left of center voter within the Democratic party and was reelected easily in 2016.

## Biography

Currently:  
Representative, TX-34  
Elected: 2012

.....

Education:  
Georgetown U., B.A., 1985  
U. of Texas, J.D., 1987

.....

Religion: Roman Catholic

.....

Family: Married

.....

Contact: (202) 225-9901  
Cannon House Office 437  
Washington, DC 20515

## Stance on Issues

- Supports tax cuts for small businesses to encourage hiring more workers
- Supports government funding for the development of renewable energy
- Opposes the federal regulation of greenhouse gas emissions
- Opposes gun-control legislation
- Opposes the repealing of Obamacare
- Favors a pathway to citizenship for illegal immigrants
- Favors higher taxes on the wealthy

## Committees

- Committee on Agriculture
- .....
- Committee on Homeland Security
- .....

## Election Results

2016 General		
.....		
Filemon Vela (D)	Votes: 104,638	Percent: 62.7%
.....		
Rey Gonzalez Jr. (R)	Votes: 62,323	Percent: 37.3%

Sources: National Journal Almanac, 2016. Ballotpedia 2016.