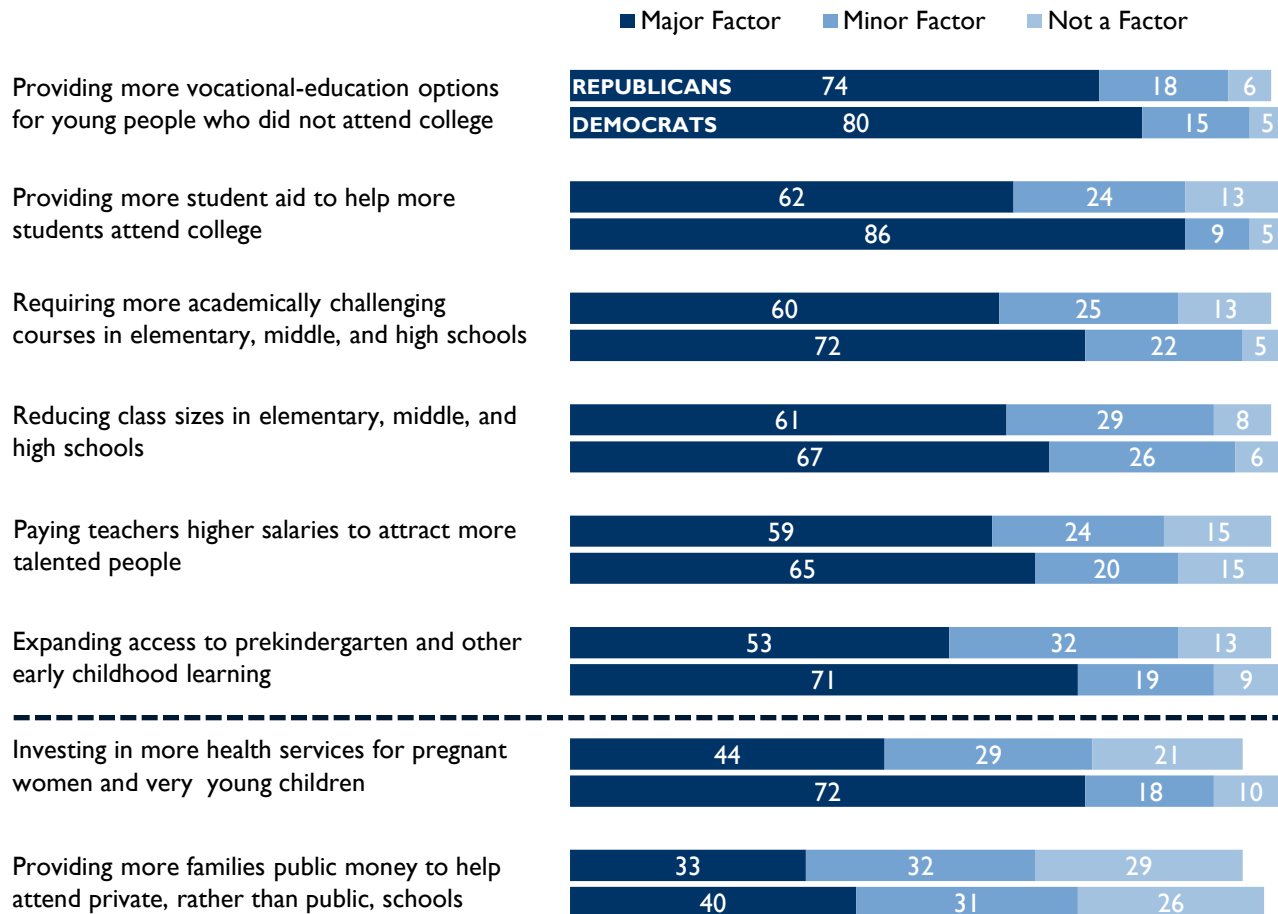


Most Believe in Policy Interventions for Education

Responses to Question: *Would this be a major factor, a minor factor, or not a factor at all in helping more children succeed?*



Majority of surveyed individuals agree with measures above line, irrespective of party affiliation

Source: National Journal Next America survey of 1,271 adults, March 18-26. Margin of error is ±3.9 points.