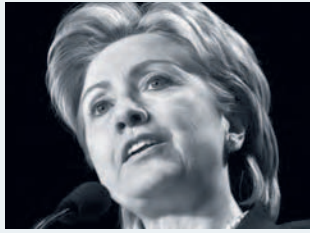


# The Presidential Contenders



Clinton

RICHARD A. ROOM



Obama

LEZ LYNCH

Sen. **Barack Obama**, D-Ill., was the most liberal senator in 2007, based on *National Journal's* vote ratings. He shifted further to the left last year in the run-up to the presidential primaries, after ranking as the 16th- and 10th-most-liberal during his first two years in the Senate. Sen. **Hillary Rodham Clinton**, D-N.Y., also shifted to the left last year, although she has generally been more moderate in the ratings than her Democratic presidential rival. Clinton was the 16th-most-liberal senator in 2007, after ranking as the 32nd-most-liberal senator in 2006. (*NJ published an analysis of Obama's and Clinton's scores in our 2/2/08 issue, which is also available at nationaljournal.com.*)

HILLARY RODHAM CLINTON (First elected 2000)		BARACK OBAMA (First elected 2004)		
	Composite Liberal Score	Liberal Ranking Among All Senators	Composite Liberal Score	Liberal Ranking Among All Senators
2001	76.3	25th	—	
2002	86.7	12th	—	
2003	88.8	8th*	—	
2004	71.0	34th	—	
2005	79.8	20th†	82.5	16th
2006	70.2	32nd	86.0	10th†
2007	82.8	16th†	95.5	1st
<b>Lifetime Average</b>	<b>79.4</b>		<b>88.0</b>	

\*Tied with two other senators.

†Tied with one other senator.

Sen. **John McCain**, R-Ariz., has moved significantly toward the center of his chamber over the past two decades, based on *National Journal's* vote ratings. In the first eight years after his 1986 election, McCain was typically among the more conservative GOP senators. But starting in 1995, he became more moderate. McCain did not receive composite scores in *NJ's* 2007 vote ratings because he missed more than half of the rated votes in both the economic and foreign-policy categories. (*NJ published an analysis of McCain's scores in our 2/9/08 issue, which is also available at nationaljournal.com.*)



McCain

HONNA ZIT

JOHN MCCAIN (First elected 1986)		
	Composite Conservative Score	Conservative Ranking Among All Senators
1987	83.5	15th
1988	82.3	16th
1989	85.3	14th*
1990	82.5	20th*
1991	81.8	20th
1992	84.5	15th
1993	74.8	27th
1994	89.2	8th
1995	70.2	32nd
1996	75.3	28th
1997	71.5	30th
1998	68.3	35th
1999	67.7	37th
2000	61.7	41st
2001	66.8	39th
2002	59.8	45th
2003	62.2	44th
2004	51.7	49th*
2005	59.2	45th
2006	56.7	46th
2007	no score	
<b>Lifetime Average</b>	<b>71.8</b>	

\*Tied with one other senator.

# Senators on the Hot Seats in November

These are the scores in *National Journal's* vote ratings for the senators considered by *The Hotline* to be facing the most-competitive races in November's election.

■ REPUBLICANS									
	Senator's Winning Vote % in 2002	State's Presidential Winner in 2004	SENATOR'S COMPOSITE CONSERVATIVE SCORES						
			2003	2004	2005	2006	2007	AVG.	
<b>John Sununu, N.H.</b>	51%	Kerry 50%	60.0	72.3	52.8	69.2	66.0	<b>64.1</b>	
<b>Norm Coleman, Minn.</b>	50	Kerry 51	75.8	61.5	65.7	53.8	57.5	<b>62.9</b>	
<b>Susan Collins, Maine</b>	58	Kerry 54	49.2	52.7	46.7	47.2	52.8	<b>49.7</b>	
<b>Gordon Smith, Ore.</b>	56	Kerry 51	60.7	65.0	50.2	54.0	52.8	<b>56.5</b>	
<b>Ted Stevens, Alaska</b>	78	Bush 61	66.3	76.0	71.0	64.0	64.0	<b>68.3</b>	

■ DEMOCRATS									
	Senator's Winning Vote % in 2002	State's Presidential Winner in 2004	SENATOR'S COMPOSITE LIBERAL SCORES						
			2003	2004	2005	2006	2007	AVG.	
<b>Mary Landrieu, La.</b>	52%	Bush 57%	61.0	59.8	58.3	57.5	53.2	<b>58.0</b>	

## House Republican Retirees

Democrats hope to expand their House majority in November by capturing the open seats being created by a wave of Republican retirees. But fewer than half of the GOP retirees are moderates, based on their scores in *National Journal's* 2007 vote ratings, and represent swing districts won either by John Kerry in the 2004 presidential race or by George W. Bush with less than 55 percent of the vote.

	Composite Conservative Score	District's Presidential Winner in 2004
<b>John Doolittle, Calif.</b>	89.0	Bush 61%
<b>Ron Lewis, Ky.</b>	87.0	Bush 65
<b>Duncan Hunter, Calif.</b> (ran for president)	85.2	Bush 61
<b>Dave Weldon, Fla.</b>	84.8	Bush 57
<b>Tom Tancredo, Colo.</b> (ran for president)	84.5	Bush 60
<b>Kenny Hulshof, Mo.</b> (running for governor)	81.3	Bush 59
<b>Steve Pearce, N.M.</b> (running for Senate)	80.0	Bush 58
<b>John Peterson, Pa.</b>	78.8	Bush 61
<b>Jim McCrery, La.</b>	77.8	Bush 59
<b>Terry Everett, Ala.</b>	77.5	Bush 67
<b>Chip Pickering, Miss.</b>	74.0	Bush 65
<b>Jerry Weller, Ill.</b>	72.3	<b>Bush 53</b>
<b>Heather Wilson, N.M.</b> (running for Senate)	68.3	<b>Kerry 51</b>
<b>Jim Saxton, N.J.</b>	67.3	<b>Bush 51</b>
<b>Michael Ferguson, N.J.</b>	65.5	<b>Bush 53</b>
<b>Ralph Regula, Ohio</b>	64.2	<b>Bush 54</b>
<b>Rick Renzi, Ariz.</b>	62.7	<b>Bush 54</b>
<b>Tom Davis, Va.</b>	60.5	<b>Bush 50</b>
<b>David Hobson, Ohio</b>	60.5	Bush 57
<b>Deborah Pryce, Ohio</b>	59.7	<b>Bush 50</b>
<b>James Walsh, N.Y.</b>	59.0	<b>Kerry 50</b>
<b>Ray LaHood, Ill.</b>	58.0	Bush 58
<b>Jim Ramstad, Minn.</b>	57.8	<b>Bush 51</b>
<b>Barbara Cubin, Wyo.*</b>	*	Bush 69

\*Cubin has no score because of missed votes.

## Defeated House Incumbents

So far, only two congressional incumbents have been defeated for renomination this primary season—Maryland Reps. Wayne Gilchrest and Albert Wynn.



Wynn

Gilchrest was unsuccessful in battling mounting conservative criticism over his moderate voting record, a record that stayed consistent in *National Journal's*

2007 vote ratings. Meanwhile, liberals attacked Wynn's moderate-leaning views during his campaign. Although he did an about-face and racked up a perfect liberal score in *NJ's* 2007 ratings, it apparently was too little, too late.

### WAYNE GILCHREST, R-MD.

Composite Conservative Score  
2006 2007

**47.0**

He was the sixth-most-liberal Republican in the House.

**51.7**

He was the most liberal Republican in the House.

### ALBERT WYNN, D-MD.

Composite Liberal Score  
2006 2007

**71.0**

He was the 133rd-most-liberal member in the House.

**95.0**

He tied with six other Democrats as the most liberal member in the House.